

GNS2

ETERNAL GALLOP



GENUS

singularity of time

In celebration of the **Year of the Horse 2026**, GENUS presents **Eternal Gallop** – an exclusive horological creation conceived especially for Temposatis LAB, uniting artistic mastery with patented mechanical innovation.



For this symbolic year, GENUS turns once more to the masters of their respective artistic disciplines. Known for sculpted dragons and kinetic racing cars that travel across their watches, the Manufacture revisits these established artistic expressions to give birth to a new race – **that of galloping horses.**

More intricate and expressive than ever, miniature horses crafted from 18K rose gold glide across the dial. Their movement reveals not only the full breadth of GENUS' horological artistry but also unlocks vast creative possibilities for sculptural timekeeping.



GENUS Eternal Gallop marks the **beginning of a new year** – one in which any creature, myth, or legend may come alive upon the wrist. A reminder that timeless stories can be reborn through mechanical poetry, carrying the spirit of ancient tales into the present.



MYTH OF THE FIRE HORSE

In ancient legend, *Qiānlǐ Mǎ* — the Thousand-Mile Horse — was said to run endlessly, its heart aflame with destiny, capable of crossing vast lands without fatigue. A symbol of perseverance, power, and divine favor, it carried heroes toward their fate.

On the infinity path of GENUS, five rose-gold horses echo that eternal race. **Five – the number representing balance, transformation, and the dynamic center of life** – gallop endlessly along a track shaped like the symbol of infinity, tracing the rhythm of time itself. Each meticulously handcrafted horse sculpture carries its own significance:



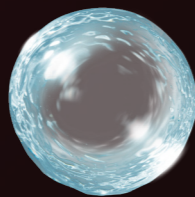
Horse 1 Horse 2 Horse 3 Horse 4 Horse 5



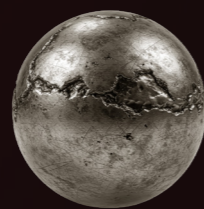
土
EARTH



木
WOOD



水
WATER



金
METAL



火
FIRE

Foundation,
Preparation,
and Steady
beginnings

Momentum
Beginning,
and **Building**

Speed,
Opportunity,
and
Progress

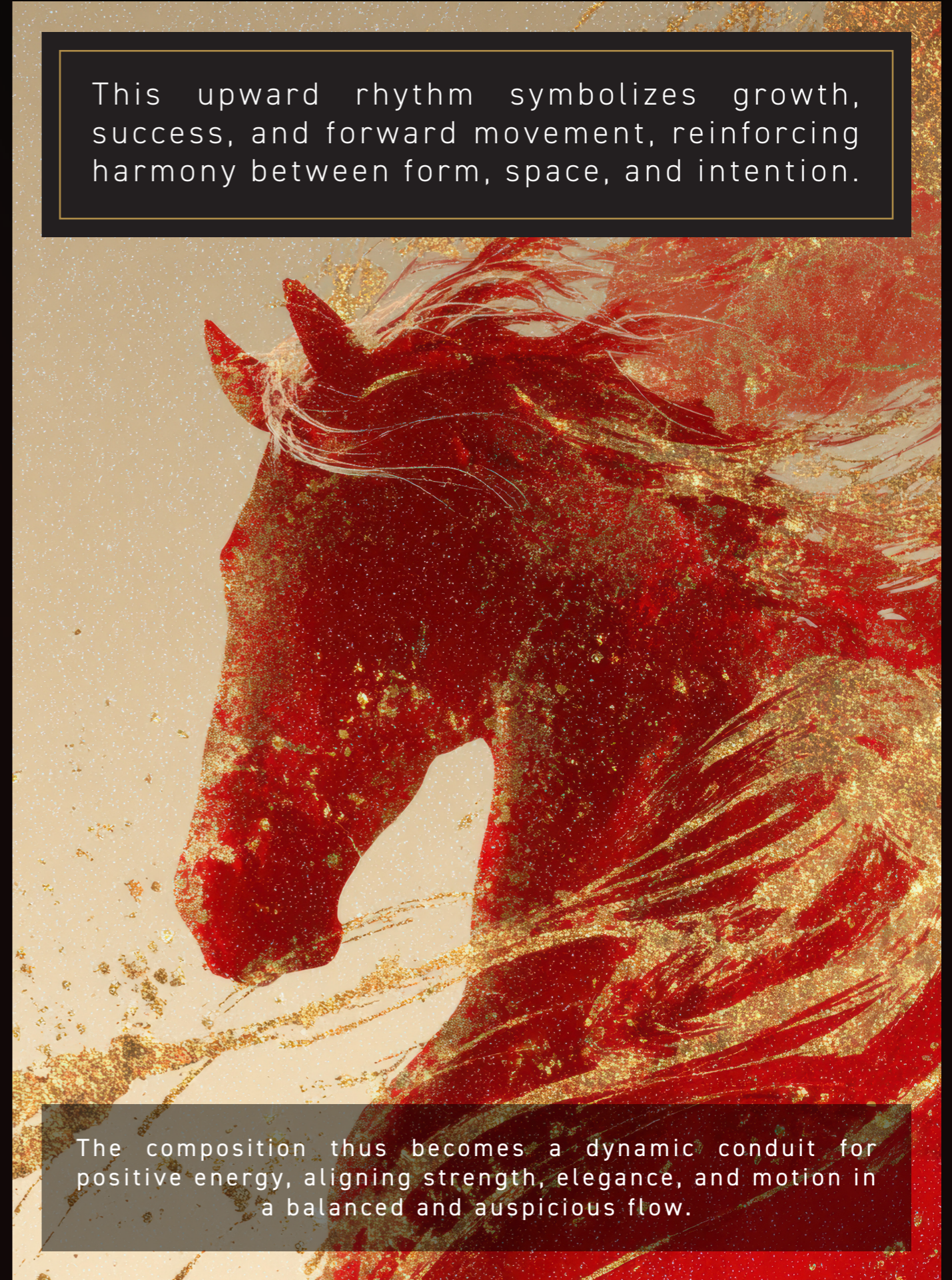
Power, and
Confidence

Victory,
Success, and
Leadership

This specific order in the placement of the horses is not arbitrary; it is carefully conceived to create a continuous rising energy flow, known in Feng Shui as Sheng Qi.

By arranging the horses in a progressive, forward-moving sequence, the eye is naturally guided from one figure to the next, generating a sense of momentum, ascent, and expansion. Each horse builds upon the energy of the previous one, allowing vitality to circulate smoothly rather than stagnate.

This upward rhythm symbolizes growth, success, and forward movement, reinforcing harmony between form, space, and intention.



The composition thus becomes a dynamic conduit for positive energy, aligning strength, elegance, and motion in a balanced and auspicious flow.



Across civilizations, the horse has long embodied strength, freedom, nobility, and transcendence. In Chinese mythology, it signifies success and celestial speed; in Greco-Roman tradition, it is associated with solar power and heroic conquest; among nomadic cultures, it represents survival, loyalty, and boundless movement.

Beneath the galloping herd, twin crescent-shaped dials bear the marks of creation. Hand-hammered until they resemble earth softened by the passage of countless hooves, their gentle, muted tones anchor the composition — a quiet counterpoint to the golden fire of motion above. At the dial's outer edge, a kite-shaped diamond glows like a guiding star, marking the fleeting present within the boundless flow of time.

INSPIRED AESTHETIC

The horse is an icon of raw power and refined grace — a duality GENUS sought to embody fully within Eternal Gallop. Each sculpted silhouette conveys tension, balance, and momentum as it travels the infinity path.

Animal realism at this scale demands exceptional mastery. Multiple engraved textures enhance depth and rhythm, while the pair of crescent-shaped dials embody the trampled ground left behind by a passing herd.

Guided by the experience and talent of Masters in their respective crafts, the result is a world unto itself: a complex, choreographed landscape where sculpture, mechanics, and time coexist — unmistakably a GENUS watch.

ARTISANSHIP – LIVING ART IN MOTION

GENUS employs some of the most demanding techniques in contemporary watchmaking.

Each gold element is sculpted, hand-engraved, and textured entirely by hand, with surfaces patiently refined to achieve exceptional depth and character. Nothing is decorative by chance; every finish serves both aesthetic and mechanical purpose.

As expressed by the creators themselves:

“We did not want to simply create an artwork, but a living art in motion.”



THE ART OF ENGRAVING

A Silent Mastery of Light and Matter

Engraving is among the most demanding Métiers d’art — a discipline shaped by irreversible gestures where every mark is final.



Working with a lifetime collection of hand-shaped tools, the Master Engraver sculpts depth under a high-precision microscope. Engraving is measured not in millimeters, but in movements. Each stroke removes metal forever.

By shaping relief and contrast, the engraver orchestrates light — guiding reflections to reveal form, tension, and volume. What appears sculptural is, in essence, a choreography of light.

THE ENGRAVED HORSES

Singular Creatures Born of Metal and Light

For GENUS, each horse is engraved entirely by hand, one by one. Even in identical poses, no two are ever the same. Each is shaped through thousands of irreversible movements.

Secured in protective resin-like wax, the form is progressively refined through thousands of irreversible movements using different families of burins. Each horse requires an estimated 12,000 individual gestures, often spread over several days. Musculature, mane, and posture emerge through subtle contrasts between matte and brilliance — hair is suggested through light rather than carved literally.

The result is not merely engraved, but alive: movement without repetition, presence without symmetry.



COMPLEXITY OF THE MYTH

What was initially envisioned as a swift project evolved into several months of intense development.

Sébastien Billières, Master Watchmaker and founder of GENUS, imposed uncompromising standards to reconcile sculptural realism with the strict mechanical constraints of a wristwatch. Each sculpture was designed to move in perfect harmony with the others, navigating the available space without ever touching.

The trajectory followed by the horses is neither linear nor circular. At its core lies an analemma, or figure-eight path — the symbol of infinity. Along this route, speed varies continuously, and each element must rotate, cross, and return with absolute precision. Every horse is unique in shape, height, and weight, ensuring flawless progression along the path.



Entirely designed, developed, and assembled in its Geneva workshop, GENUS Eternal Gallop is the first and only watch in the world in which galloping horses themselves express the passage of time.

A QUINTESSENTIAL INTERACTION

The magic of Eternal Gallop lies in the dialogue between crafts.



Watchmaker, designer, engineer, goldsmith, sculptor, and engraver worked in close collaboration to achieve unprecedented realism while respecting mechanical tolerances measured in fractions of a millimeter. Every volume, texture, and transition was studied to allow the horses to glide, cross, and return along the infinity path without interference.

The movement was assembled, disassembled, and reassembled multiple times to perfect fluidity and expressiveness, requiring repeated refinements of surfaces and finishes. To showcase this spectacle, the sapphire crystal was specially developed — raised and gently curved — transforming the watch into a transparent dome that magnifies space, light, and motion.

THE AESTHETIC AND MECHANICAL FOUNDATIONS

The dial of Eternal Gallop is divided into two perfectly mirrored sections, echoing the symmetry and duality at the heart of the GENUS philosophy. Each section is meticulously hand-hammered with tens of thousands of microscopic strikes, executed using a specialized tool with a tip measuring less than one tenth of a millimeter.



This painstaking process creates a subtly irregular, living surface that interacts dynamically with light, giving each dial its unique character and depth.

The case is crafted from a single block of Grade 5 titanium, combining lightness with structural integrity. Hollowed flanks accentuate its graceful curvature, enhanced by a finely sandblasted finish. Water-resistant to 30 meters, the case

is topped by a specially developed glass-box sapphire crystal, offering an unobstructed view into the kinetic world beneath.

At the heart of Eternal Gallop beats Calibre 260Rh-2, the patented mechanical foundation of the GNS2. Conceived in two complementary modules, it offers exceptional creative freedom and long-term evolvability. The base movement groups the essential functions, including a unique barrel delivering a 50-hour power reserve, while the upper module governs the GENUS signature display of hours and minutes.

Each component is designed and hand-finished in-house by Sébastien Billières in close collaboration with his sister Sarah. Straight-grain finishes, mirror-polished surfaces, and intricate snailing reflect the highest standards of traditional Haute Horlogerie finishing, ensuring that every element interacts harmoniously with light.





CALIBRE TRANSFIGURATION

In Eternal Gallop, it is not arrows but sculpted horses that carry time forward.

By adopting figurative form, the free-moving

genera demonstrate the extraordinary flexibility of GENUS' patented mechanical architecture, transforming technical rigor into poetic motion and reaffirming the brand's belief that time can be both measured and felt.

MECHANICAL LEGITIMACY & HERITAGE

GENUS' singular approach to timekeeping was recognized in 2019 with the Mechanical Exception Prize at the Grand Prix d'Horlogerie de Genève. Built upon patented orbital mechanics found nowhere else, GENUS watches replace conventional indicators with free-moving elements that embody the passage of time.

In 2024, GENUS unveiled its bespoke GNS2 patented movement, a refined synthesis bridging the mechanical audacity of the GNS1 with a more intuitive, classical perception of time — forming the foundation upon which Eternal Gallop was made.



DIGITAL PASSPORT

To guarantee authenticity and lifelong traceability, GENUS partners with Watch Certificate, providing each timepiece with a secure digital certificate based on blockchain technology. Authenticity and origin, ownership history, servicing, and transactions are recorded and protected throughout the watch's lifetime.



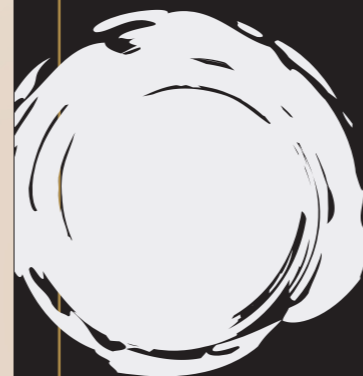
LIMITED EDITION

GENUS Eternal Gallop is a worldwide exclusive and strictly limited edition of precious timepieces being crafted solely for Temposatis LAB and their partners.

There will be two distinct models - only eight timepieces having a case of Grade 5 titanium, and eight with a case of 18K rose gold.

Every timepiece will be individually numbered.

Rare, uncompromising, and deeply expressive, Eternal Gallop stands as a singular testament to GENUS' vision of sculptural watchmaking — where myth, motion, and mastery converge.



TITANIUM EDITION

Model: GNS2 T5 Eternal Gallop

Limited Edition: 8 pieces only — Grade 5 titanium, full-black finish

- ◇ **The horses:** 18K rose gold, hand sculpted and hand finished by our Master Engraver. Each horse is a unique miniature sculpture
- ◇ **Patented orbital complication:** Minutes are displayed on our “8-path” — the symbolic shape of infinity. Passing minutes are indicated by the lead horse.
- ◇ **GENUS peripheral hour rotation mechanism:** Passing hours are indicated by a bespoke-cut kite shaped diamond, invisibly set
- ◇ **Dial decoration:** Hand-hammered and hand-angled, full-black finishing
- ◇ **Case & pin buckle material:** Grade 5 titanium, finished with black A-DLC coating (Amorphous Diamond-Like Carbon)
- ◇ **Crystal:** Hyper-domed sapphire crystal glass, anti-reflective coating



ROSE GOLD MASTERPIECE EDITION

Model: GNS2 RG Eternal Gallop Masterpiece

Limited Edition: 8 pieces only — 18K rose gold, 4N color

- ◇ **The horses:** 18K rose gold, hand sculpted and hand finished by our Master Engraver. Each horse is a unique miniature sculpture
- ◇ **Patented orbital complication:** Minutes are displayed on our “8-path” — the symbolic shape of infinity. Passing minutes are indicated by the lead horse.
- ◇ **GENUS peripheral hour rotation mechanism:** Passing hours are indicated by a bespoke-cut kite shaped diamond, invisibly set
- ◇ **Dial decoration:** Hand-hammered and hand-angled bicolor black and 4N rose gold finishing
- ◇ **Case & pin buckle material:** 18K rose gold, 4N color
- ◇ **Crystal:** Hyper-domed sapphire crystal glass, anti-reflective coating



TECHNICAL SPECIFICATIONS

DESCRIPTION	
Collection	GNS2
Watch name	GNS2 Eternal Gallop // GNS2 Eternal Gallop Masterpiece
Material	Grade 5 titanium (T5) // 18K rose gold, 4N color (RG)
Watch reference	GNS2 T5 0124/xx // GNS2 RG 0124/xx
Limited Edition	8 pieces only // 8 pieces only
CASE & DIAL	
Case material	Grade 5 titanium, black A-DLC coating // 18K rose gold, 4N color
Diameter	43 mm
Thickness	18.8 mm
Dial	Open-work dial composed of 5 parts: Two lateral crescent-shaped dials with precision hand-hammered and angled decoration, two round central dials with tens-of-minutes indication, and the hours and minutes tracks
Crown	Grade 5 titanium, black a-DLC coating, G-E-N-U-S letters in relief around its circumference // 18K rose gold of 4N color, G-E-N-U-S letters in relief around its circumference
Crystal	Hyper-domed "glass box" sapphire crystal with antireflective coating
Case back	Grade 5 titanium, black A-DLC coating, screw-secured, open view sapphire crystal with antireflective coating // 18K rose gold of 4N color, screw-secured, open view sapphire crystal with antireflective coating
Water resistance	30 meters (3 ATM)
MOVEMENT	
Winding	Manual
Caliber reference	260Rh-2
Diameter	38 mm
Height	7.7 mm
Components	285
Rubies	26
Frequency	2.5 Hz or 18'000 vibrations per hour
Power reserve	About 50 hours
Regulating organ	Swiss lever escapement, hair spring, variable inertia balance wheel
TIME DISPLAY COMPLICATION	
Hours	A bespoke baguette-cut diamond in the shape of a kite glides along the display complication's periphery and shows the passing hour and 15-minute increments on the hour track
Minutes	Five free-moving 18K rose gold horses gallop between two counter-rotating minute wheels (patented) and indicate the passing 10s-of-minutes and precise minute on the 8-path track
STRAP & BUCKLE	
Strap	Rubber strap, textured, with folded edges and top stitching - Black
Buckle	Pin buckle of Grade 5 titanium, black A-DLC coating, engraved with the GENUS logo // Pin buckle of 18K rose gold, 4N color, engraved with the GENUS logo

GENUS Watches

Redefining the Flow of Time

Founded in Geneva by master watchmaker Sébastien Billières, GENUS is an independent Haute Horlogerie Maison driven by innovation, craftsmanship, and emotion. From the outset, GENUS set out to rewrite the rules of time display – earning the Grand Prix d'Horlogerie de Genève (GPHG) Mechanical Exception Award in 2019 for its pioneering movement that lets time flow freely along an infinity path.

Each GENUS creation is entirely conceived, crafted, and hand-finished in our Geneva atelier. The brand embodies mechanical poetry, creative audacity, and authentic independence, values that resonate with collectors seeking true artistic watchmaking.

Temposatis LAB

PRESS CONTACT:

Ms. Aleyda Licón

Temposatis LAB - International Marketing Director
 aleyda.licon@temposatis.com
 M. +52 56 6674 3396

COMMERCIAL CONTACT:

Mr. Boon Chong Soon

Co-Founder Temposatis LAB
 boonchong.soon@temposatis.com
 M. +41 78 319 3183


GENUS
singularity of time



You are cordially invited to book a private appointment to discover the GNS2 Eternal Gallop.

Visit us at Watches and Wonders Geneva or contact us for a dedicated presentation of this exceptional creation.

MARKETING & DISTRIBUTION CONTACT

Ms. Pamela Cloutier
pamela.cloutier@genuswatches.swiss

GE Watches SA
contact@genuswatches.swiss
Route de la Galaise 24, 1227 Plan-les-Ouates Switzerland
www.genuswatches.swiss